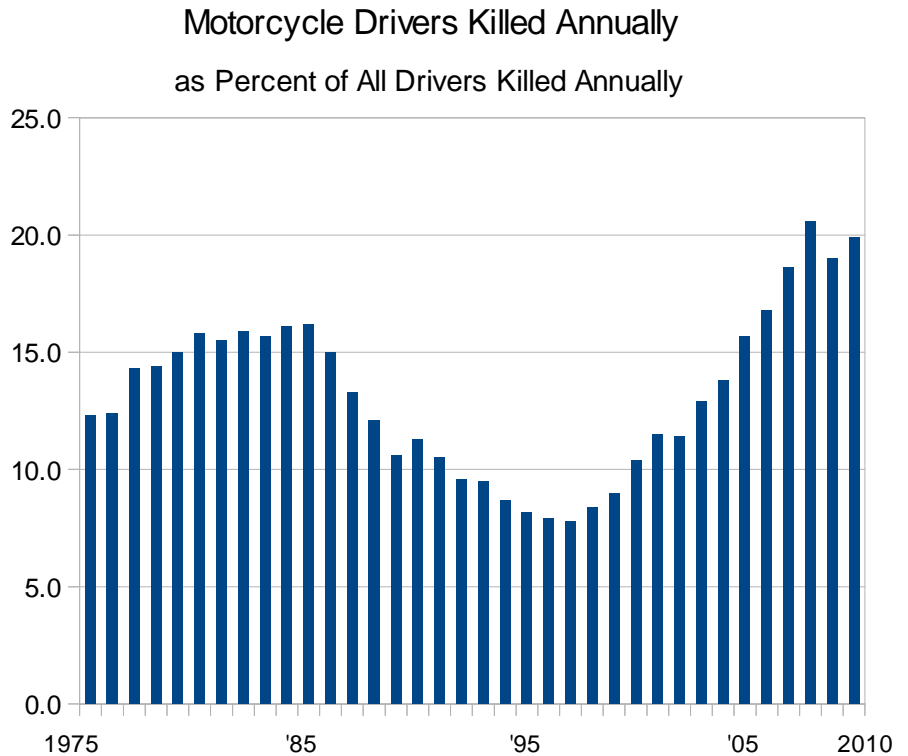


USA

Motorcycle Drivers Killed Compared to All Drivers Killed

All Drivers = Passenger Vehicles Drivers plus Motorcycle Drivers

	Motor- <u>cycles</u>	Passenger <u>Vehicles</u>	Percent <u>MC</u>
1975	2,728	19,479	12.3
1976	2,825	20,035	12.4
1977	3,489	20,923	14.3
1978	3,847	22,781	14.4
1979	4,067	23,104	15.0
1980	4,309	22,958	15.8
1981	4,152	22,560	15.5
1982	3,726	19,686	15.9
1983	3,594	19,356	15.7
1984	3,902	20,314	16.1
1985	3,898	20,108	16.2
1986	3,790	21,527	15.0
1987	3,411	22,193	13.3
1988	3,140	22,899	12.1
1989	2,687	22,562	10.6
1990	2,791	21,953	11.3
1991	2,405	20,541	10.5
1992	2,079	19,596	9.6
1993	2,110	20,086	9.5
1994	1,970	20,707	8.7
1995	1,914	21,511	8.2
1996	1,853	21,692	7.9
1997	1,853	21,782	7.8
1998	1,989	21,714	8.4
1999	2,181	21,971	9.0
2000	2,549	21,893	10.4
2001	2,843	21,933	11.5
2002	2,915	22,616	11.4
2003	3,302	22,270	12.9
2004	3,517	22,027	13.8
2005	4,104	22,018	15.7
2006	4,369	21,629	16.8
2007	4,677	20,493	18.6
2008	4,733	18,207	20.6
2009	3,927	16,753	19.0
2010	3,965	15,921	19.9



Prepared by National Motorcycle Training Institute
 12.29.2011 www.nmcti.org/nmctidata.html
 Data obtained from the Fatality Analysis Reporting
 System (FARS) maintained by the National Highway
 Traffic Safety Administration (NHTSA)