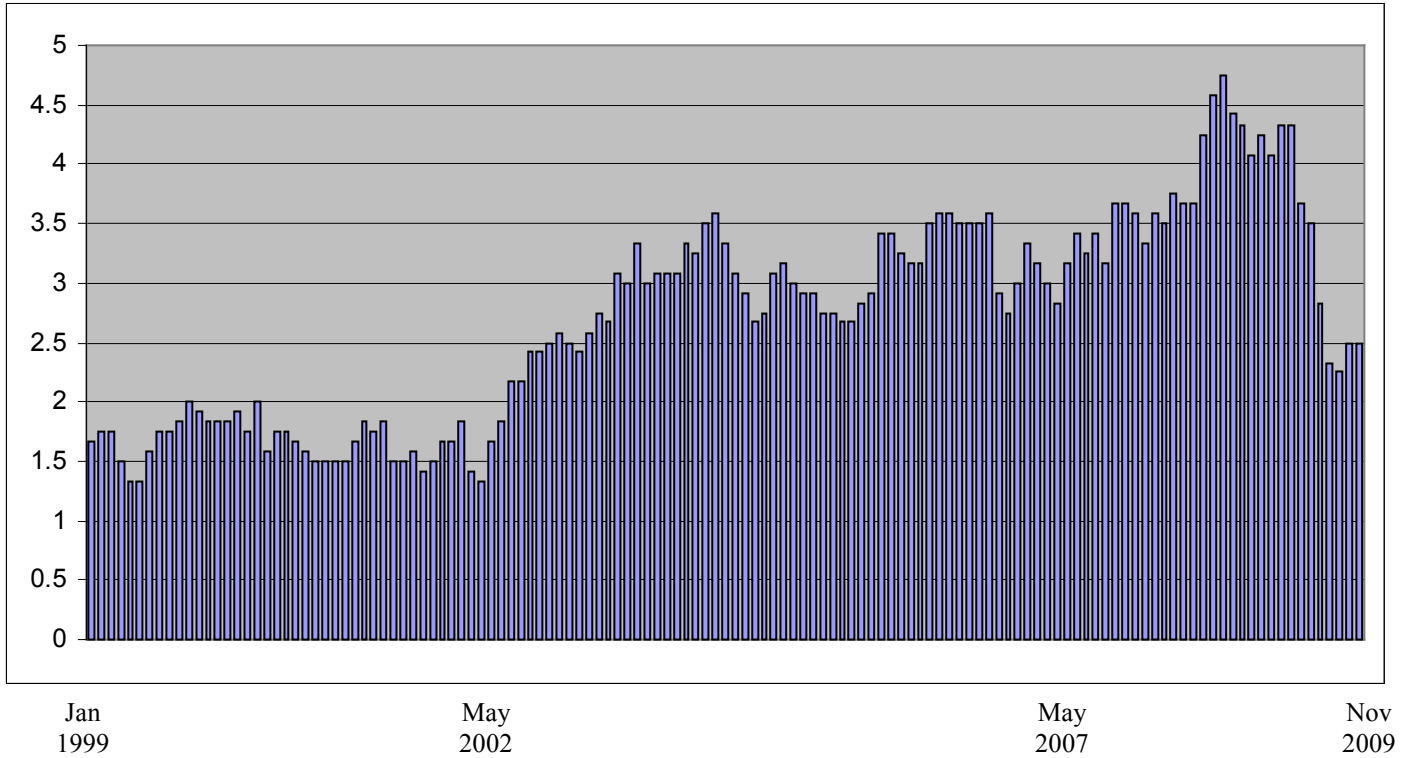


Combined Sailor/Marine Motorcycle Fatality Rate

Monthly Fatalities, Non-Operational: 2-Wheel MV, Rolling Average
(Averaged over the previous 12 months to eliminate seasonal effects.)

Current Rate is 2.5 deaths per month Nov 2009
High 4.75 Sep 2008, Low 1.33 May 1999



Current Month	Deaths	12 Month Rolling Average
Nov 11	2	2.5
Oct 10	5	2.5
Sep 9	3	2.25
Aug 8	3	2.33
Jul 7	2	2.83
Jun 6	2	3.5
May 5	0	3.67
Apr 4	5	4.33
Mar 3	4	4.33
Feb 2	1	4.08
'09 Jan 1	3	4.25
Dec 12	0	4.08
11	2	4.33
10	2	4.42

	9	4	4.75
	8	9	4.58
	7	10	4.25
	6	4	3.67
	5	8	3.67
	4	5	3.75
	3	1	3.5
	2	3	3.58
2008	1	1	3.33
	12	3	3.58
	11	3	3.67
	10	6	3.67
	9	2	3.17
	8	5	3.42
	7	3	3.25
	6	4	3.42
	5	9	3.17
	4	2	2.83
	3	2	3
	2	0	3.17
2007	1	4	3.33
	12	4	3
	11	3	2.75
	10	0	2.92
	9	5	3.58
	8	3	3.5
	7	5	3.5
	6	1	3.5
	5	5	3.58
	4	4	3.58
	3	4	3.5
	2	2	3.17
2006	1	0	3.17
	12	1	3.25
	11	5	3.42
	10	8	3.42
	9	4	2.92
	8	3	2.83
	7	5	2.67
	6	2	2.67
	5	5	2.75
	4	3	2.75
	3	0	2.92
	2	2	2.92
2005	1	1	3
	12	3	3.17
	11	5	3.08
	10	2	2.75
	9	3	2.67
	8	1	2.92
	7	5	3.08
	6	3	3.33

5	5	3.58
4	5	3.5
3	0	3.25
2	3	3.33
2004	3	3.08
12	2	3.08
11	1	3.08
10	1	3
9	6	3.33
8	3	3
7	8	3.08
6	6	2.67
5	4	2.75
4	2	2.58
3	1	2.42
2	0	2.5
2003	3	2.58
12	2	2.5
11	0	2.42
10	5	2.42
9	2	2.17
8	4	2.17
7	3	1.83
6	7	1.67
5	2	1.33
4	0	1.42
3	2	1.83
2	1	1.67
2002	2	1.67
12	1	1.5
11	0	1.42
10	2	1.58
9	2	1.5
8	0	1.5
7	1	1.83
6	3	1.75
5	3	1.83
4	5	1.67
3	0	1.5
2	1	1.5
2001	0	1.5
12	0	1.5
11	2	1.58
10	1	1.67
9	2	1.75
8	4	1.75
7	0	1.58
6	4	2
5	1	1.75
4	3	1.92
3	0	1.83
2	1	1.83

2000	0	1.83
12	1	1.92
11	3	2
10	2	1.83
9	2	1.75
8	2	1.75
7	5	1.58
6	1	1.33
5	3	1.33
4	2	1.5
3	0	1.75
2	1	1.75
1999	1	1.67